

DUST-FREE – BOTH INDOORS AND OUTDOORS

bema Industry

| bema 40 Industry

Almost completely dust-free working: fully encapsulated machine housing with integrated waste container and dust-protection panelling

No trouble with any type of dirt: special brush barrels collect both stubborn coarse dirt and fine particles

Ideally adjusted to the ground conditions: infinitely variable brush barrel pressure and level-balancing





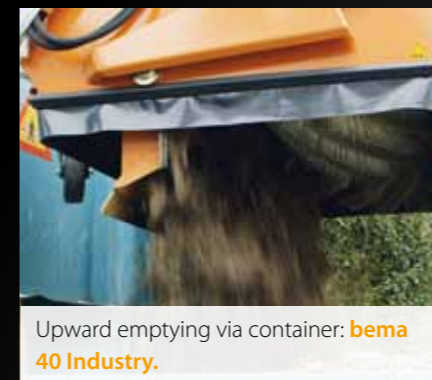
bema Industry
bema 40 Industry

- **Almost completely dust-free working:** fully encapsulated machine housing, all-round dust-protection panelling and water spray unit
- **Brushing as conditions demand - whether coarse dirt or fine dust:** brush barrel Ø 660 mm with fittings adapted accordingly
- **Central control and protection for the entire hydraulic system:** Hydroblock with all necessary power units such as overrun protection and pressure-relief valve
- **Clearing large volumes of dirt without interruption:** dirt container hydraulic with large collection capacity and a polyurethane scraper bar
- **Optimum running:** super-elastic wheels Ø 200 x 80 mm as well as a third support wheel Ø 250 x 80 mm (railsafe) and level-balancing
- **Up above:** upward emptying via container

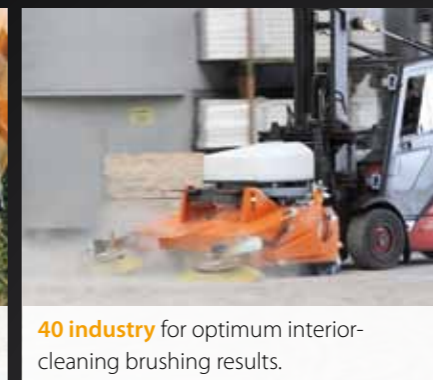
Optional features

- A large number of mounting options
- Rotary side brushes
- Water spray unit
- On-board hydraulics with combustion motor

Machine type Working width	bema 40 Industry 1250	bema 40 Industry 1550	bema 40 Industry 2050
Drive	gerotor motor, drive shaft Ø 32 mm (fully integrated in the brush barrel, heavy-duty series)		
Hydraulic power of the carrying vehicle	at least 20 L/min	at least 30 L/min	at least 40 L/min
Waste container volume	approx. 275 L	approx. 345 L	approx. 450 L
Weight excl. special fixtures	approx. 460 kg	approx. 500 kg	approx. 570 kg
Main brush barrel	Ø 660 mm (PPN (industrial trim), steel/PPN, steel flat wire / PPN)		
Brush barrel speed	recommended 100 - max. 150 rpm		
Rotary side brushes	Ø 800 mm, hydraulic drive (PPN industrial trim, steel/PPN Multi-mix trim, steel flat wire / PPN- or steel flat wire trim)		
Water spray unit	200 L water tank, tank filter and 12 / 24 V pressure pump		



Upward emptying via container: **bema 40 Industry.**



40 industry for optimum interior-cleaning brushing results.



bema 40 Industry with Yanmar diesel combustion motor.

bema Industry
Our products up close



Hydroblock includes all power units for the control of all functions.

Brush barrel set with left- or right-hand twist for ideal cleaning of all surfaces.



Technical data and weights are approximate and non-binding.