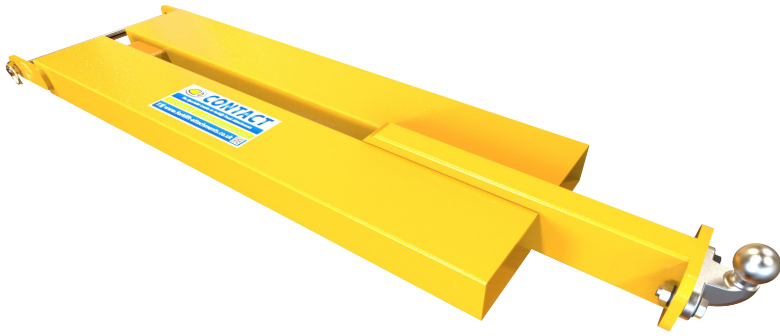


Forklift Pushing Hitch



Our forklift pushing hitch enhances conventional forklift capabilities, allowing for effortless pushing and shunting of objects like trailers with precision.

With safety being top priority, our forklift pushing hitch, features a secure heel retention system for stability and peace of mind when maneuvering heavy loads.

Fitted with a 3000kg capacity ball hitch as standard, our pushing hitch is ready for a variety of tasks, from moving trailers to containers.

Upgrade your forklift with our reliable and durable pushing hitch to increase efficiency in warehouses, construction sites, and other industries requiring efficient material handling.

Model Ref	Capacity (kg)	Length (mm)	Max Fork Size (mm)	Max Fork Spread (mm)	C of G (mm)	Weight (kg)
FM-THBP	3000	1200	140 x 50	355	620	

Features & Benefits

- Supplied with 50mm diameter ball hitch and pin for maximum usage flexibility
- Standard length of 1200mm making it compatible with most standard forklift forks
- Heel pin retention to ensure the push hitch is secured safely to forklift forks
- Generous 'drive in' fork pockets making the push hitch one person fitment, thus helping to reduce standing time and downtime

It is recommended that a forklift is not used for towing without first checking the suitability of the truck, and probable restrictions with the truck manufacturer

